

The logo for Zyple Software, featuring the word "Zyple" in a large, blue, stylized font with a thick blue outline. Below it, the word "SOFTWARE" is written in a smaller, green, sans-serif font.

Zyple
SOFTWARE

**ERP
eXploration**

A large industrial refinery or chemical plant is shown at sunset. The sky is filled with soft, orange and pink clouds. The refinery features several tall, cylindrical distillation columns and a complex network of pipes and scaffolding. The scene is illuminated by the warm light of the setting sun, with some lights visible on the facility.

www.zyplesoft.com

ABOUT US

Zyple Software founded in Jan 2018 by 3 technocrats and an visionary to provide ERP & Business Automation Solutions including integration with IoT, Industry 4.0 & 5.0, Robots, Cobots and for emerging needs of every business vertical

Our Services into SAP Business One HANA, windows application Development, mobile app developments, website design , POS Development , HRMS Solutions Developments , Payroll Outsourcing and ERP Support service.

135+ Years of Collective experience is put in use to reflect our clients legacy into digital transformation in a true sense! Is our unique strength as a distinguished IT Company based in Bangalore, India and Abu Dhabi, UAE delivering high quality and cost-effective business solutions

RUN SIMPLE
RUN BETTER

SAP Business
One

Supports MS SQL and In
Memory Computing (HANA) DB



SAP Business One
is used in 170+ countries

360+ large enterprises are running
SAP Business One in 5,600+ subsidiaries

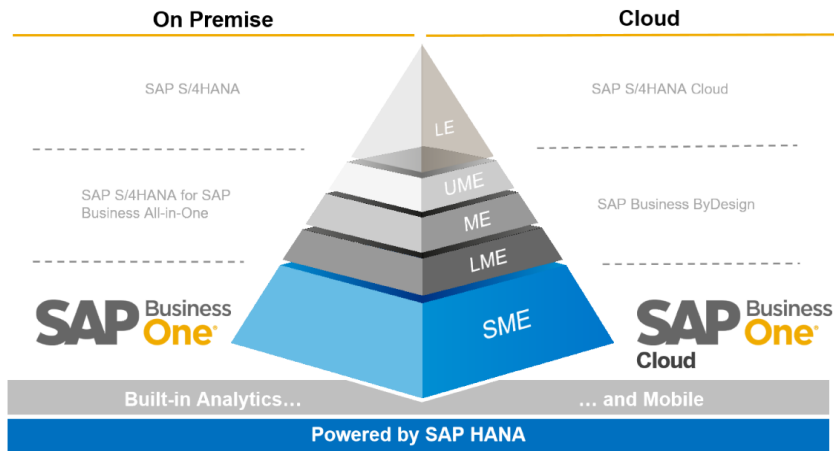
Available as 50 country
localizations and in 28 languages

Used by 70,000+ customers
and more than 1,100,000+ users

Positioning in Across World

Approx. 50% of Business are Automating their processes Globally

Approx. 58% of Business are Automating their processes in India



© 2020 SAP SE or an SAP affiliate company. All rights reserved. | PUBLIC

SAP serves >388,000 customers in >180 countries

Approx. 80% of SAP customers are SMEs

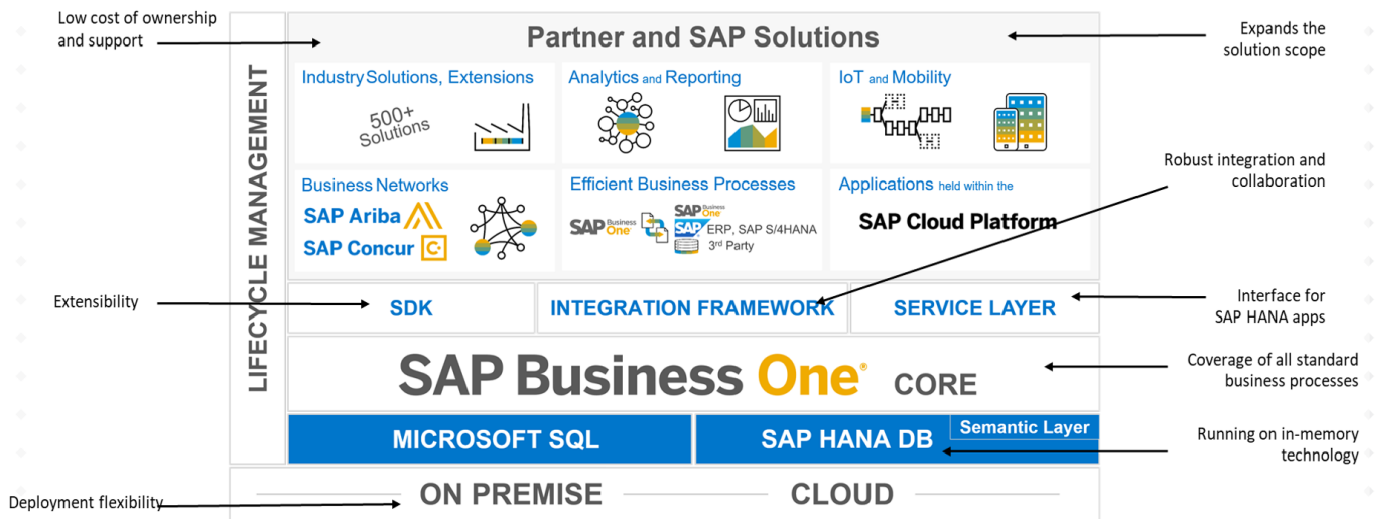
Key Functions

SAP Business One Client Web Client Mobile Analytics/Dashboards Multilingualism/Localizations

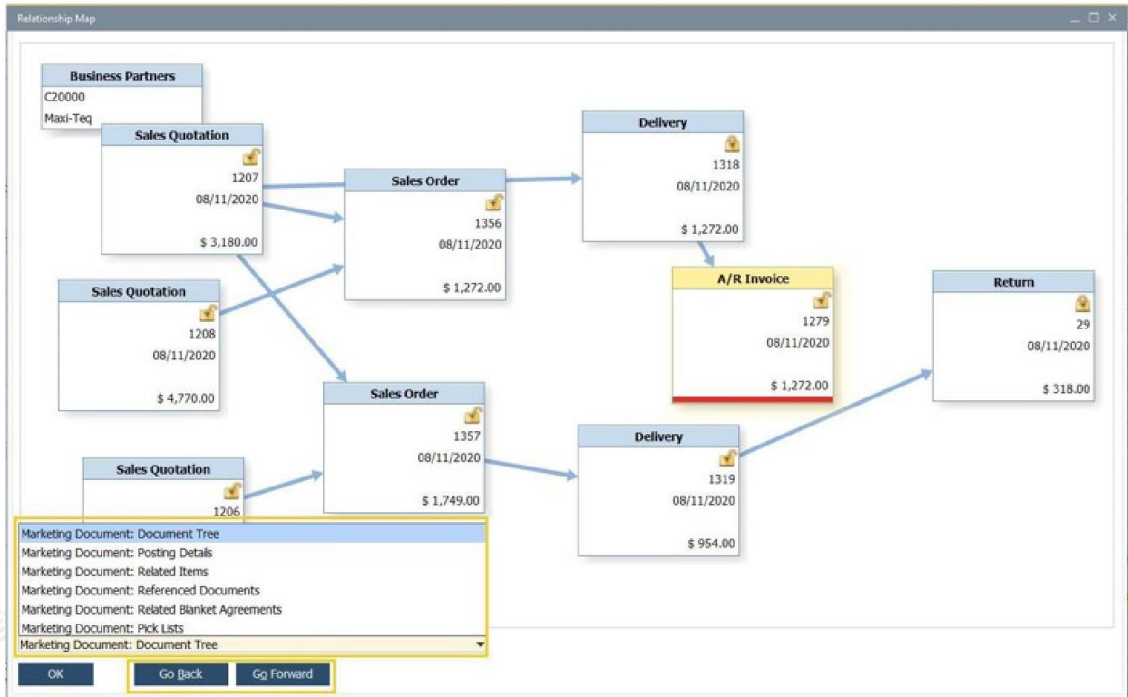
Management & Administration	Accounting & Financials	Purchasing & Operations	Sales & Service	Inventory & Distribution	Production & MRP	Project & Resource Management	Solution Customizing
<ul style="list-style-type: none"> User administration Authorizations Multiple currencies Exchange rates Multiple posting periods Multi-branch Data import Opening balances Approval processes Calendar Microsoft Office integration Mobile Interaction Recurring transactions Drop Ship GDPR 	<ul style="list-style-type: none"> Chart of accounts Journal entries Posting templates Recurring postings Financial reports Budget management Cost accounting Incoming payments Outgoing payments Payment run Bank statement processing Checks & credit cards Deferred payments Account reconciliation DAIEV / ELSTER (DE) Fixed Assets SEPA 	<ul style="list-style-type: none"> Purchase request Purchase quotations Web-enabled RFQ Purchase orders Goods receipt POs Goods returns A/P Invoice A/P Reserve Invoice Down-payment Invoice Down-payment request Cancel Marketing Documents A/P credit memos Landed costs Intra-stat PEPPOL 	<ul style="list-style-type: none"> Opportunity and pipeline Mgmt. CRM Campaign Mgmt. Blanket agreements Quotations Sales orders Deliveries & Returns Invoices Dunning & Customer Mgmt. Gross profit calculation Service Mgmt. Service planning Customer interactions tracking Equipment card handling Service Dashboards Service contracts Human resource integration Knowledge database Service calendar Service call processing 	<ul style="list-style-type: none"> Item management Item lists Price lists Goods receipts Goods issues Inventory transactions Transfers Serial number mgmt Batch number mgmt. Price lists in multiple currencies Special prices Period and volume discounts Pick and pack Recurring transactions Inventory Tracking Bin Location Multiple Measurements Inventory Counting 	<ul style="list-style-type: none"> Bills of material Item Sets Production orders Goods issues Goods receipts Production Dashboards GL Account Determination Life Cycle Mgmt. Item cost calculation Forecasts MRP Make to order Order recommendations Production Routing 	<ul style="list-style-type: none"> Project management Project stages Stage dependencies Sub-projects handling Project Time Reporting Internal project handling Employee master data Time sheet entries Resource master data Resource capacity planning Gantt chart capacity viewing 	<ul style="list-style-type: none"> User-defined fields creation User-defined tables creation User-define queries creation Form UI configurator SQL Query Generator Transaction notifications Workflow designer Business process checklist User defined Cockpit User-defined workbench

© 2020 SAP SE or an SAP affiliate company. All rights reserved. | PUBLIC

Solution Approach



Analytics & Dashboard



RELATIONSHIP MAP

File Edit View Data Sales Modules Tools Window Help

Welcome, Devon Butler. You are in the Sales cockpit of DEC Computers.

Search for operations, master data, and documents

Sales Analysis

Overview Currency: \$

Fiscal Year Analysis 2019

Opportunity Win Rate

Fiscal Year to Date Analysis Customers: All

Top 5 Customers

Parameter Tech	Item	Revenue	%	Quantity
1	Canon EO	9300.00	30%	12
2	HP Color	5200.00	14%	7
3	HP Color	4800.00	13%	9
4	EM Info	2400.00	7%	4
5	Multisio	2400.00	7%	6

Parameter Tech

Opportunities Status

Win Lost Open

Open Documents

- Sales Quotations
- Returns
- A/R Invoices
- A/R Reserve Invo...
- Sales Orders
- A/R Down Paymen...
- A/R Credit Memos
- Deliveries
- A/R Down Paymen...
- A/R Reserve Invo...

Messages and Alerts

- Request for Document Approval: 07/04/2018
- Request for Document Approval: 07/01/2018
- Document generation approved: 07/04/2018

Common Functions

- Sales Opportunity
- Sales Quotation
- Sales Order
- Delivery
- A/R Invoice
- During Invoic
- Item-Master Data
- Ship List
- Business Partner ...
- Return
- A/R Down Paymen...
- A/R Reserve Invo...
- Document Printing

Browser

5250 Dollars = 4,016 Euro

Free exchange rate tables for your website, any currency in the world

Ads by Google

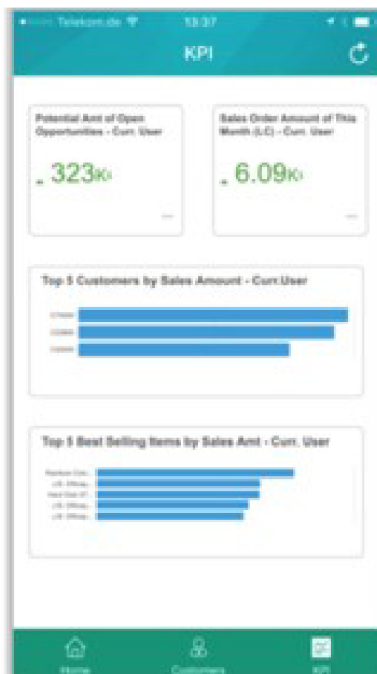
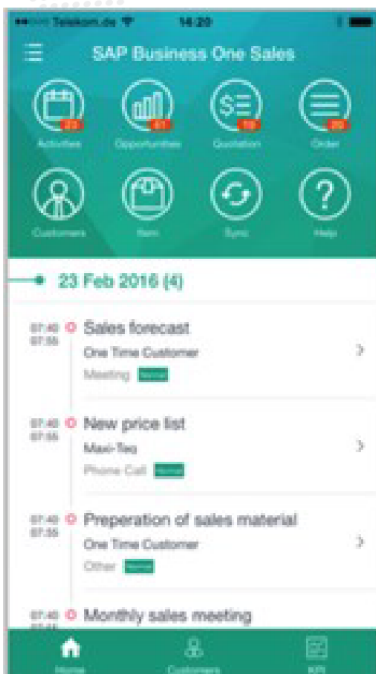
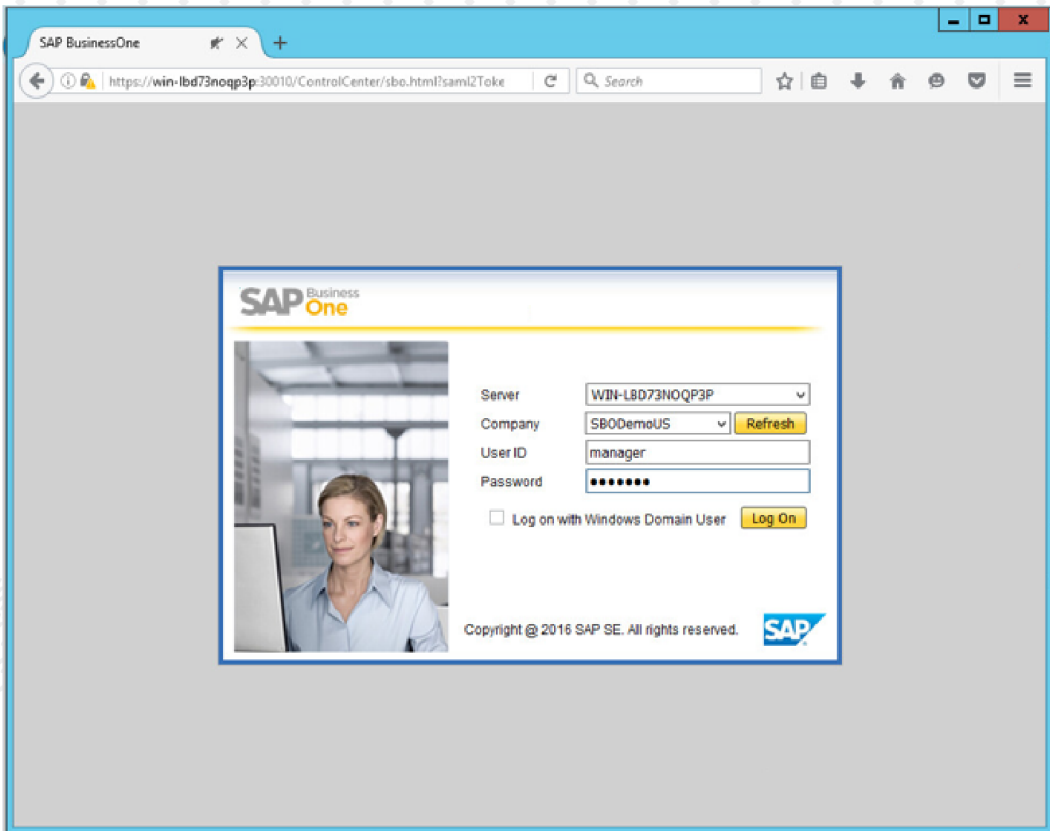
System Manager Log (20)

© SAP AG 2018 10:17

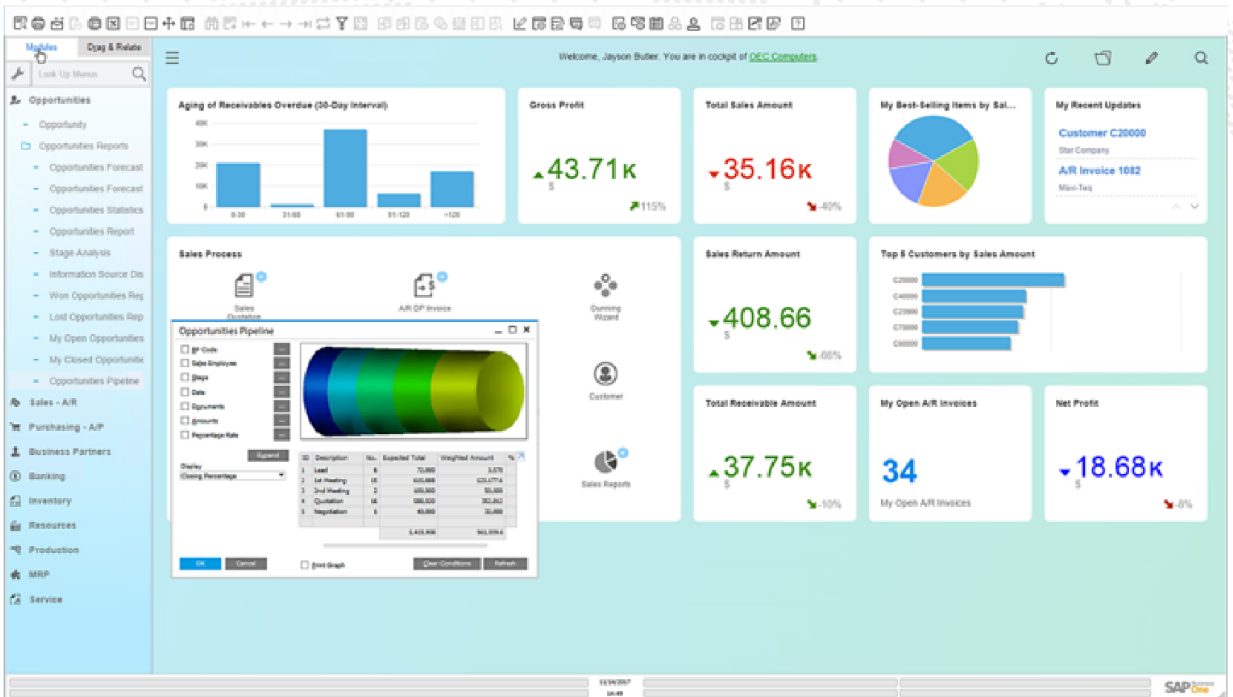
SAP One

MAIN DASH BOARD

Web browser & Mobile Access



CRM - Dash Board



Zyple Process Industries Offerings

pharma, bio pharma, drug, life science and Natural Extracts, Petro-Chemical, Pigments & paints, pulp and paper, Speciality Chemical, food & Beverages, Confectionery and Candies

Zyple - Production

- Resources Master
- Recipes Master
- Process Orders
- Product cost planning
- Processes management
- Production info MGMT
- Waste disposal

Zyple - PMS

- PMS Category Master
- PMS Activity Master
- PM S Check List
- PMS Activity Plan
- Activity Carried Out
- Break Down Entry
- Fuel Consumption

Zyple - SUBCONTRACTING

- Subcon PO
- Subcon BOM
- Subcon Request
- DC for Sub-Contracting
- Sub-Contracting GRN
- SubCon Return
- Subcon Scrap Account

Zyple - Quality

- Parameter Master
- QA Management
- QC Management
- cGMP Management
- Change Control Management
- Certificate of Analysis
- BMR Management
- 8D management
- Customer complaint
- Vendor complaint

BAR CODE / QR INTEGRATION
BANK STATEMENT INTEGRATION WITH
SAP B1

QbD (Quality by Design) Management

Cpfr integration (Mobile App)

(Collaborative planning and forecast replenishment)

Customer experience integration

sms / e-mail integration

Asn integration

(Advance shipment notification)

ASRS Integration

Weigh bridge integration

Fleet management

E-commerce integration

poS Integration

HRMS Integration

Pay-roll integration

Project management

Testimonials (customer's)

Hectronic India implemented SAP BI in the 2019 and entered service contract with Zyle software. I have to say SAP BI has transformed the way we do business. SAP BI provides us with critical insight into our business which allows us to make fast decisions and ultimately become more dynamic and competitive in the marketplace. Considering the SAP BI dependency we tied up service contract with Zyle Software in 2019. Zyle software is supporting our SAP user for their day to day activities and providing extensive training to new users. Also they have very good experienced team who take cares of all the SAP modules. Zyle team formed new process in some of our activities which is more effective and time saving. I am happy to see continued our engagement with Zyle software I wish you all the best Zyle team

Bahubali Amatur,
IT Manager,

HECTRONIC INDIA RETAIL &
PARKING AUTOMATION PRIVATE
LIMITED

“It has been a complacent journey on SAP B-one Implementation with Zyle Solutions at our premises, the team is competent and courage enough to manage the every business needs by providing the effective and efficient customized solutions using SDK and Add-ons Applications developed in a quick and resilient manner”

Saravanan R
Sr. Manager Operations
Paloma Turning Co. Pvt. Ltd.

“We are really impressed with the quality of services we receive from the ZYPLE. They are right on schedule, charge reasonable prices, are professional and courteous in dealings, and always delivery on time. They have a very good team to work on SAP BI , Add-ons & Integration”

Manoj Bansal
Chief Operating Officer
William Penn Pvt. Ltd.,



<https://www.youtube.com/watch?v=mL6lh0S7GzA>

Joyous Customers

Continuous Manufacturing (Process Industries)



Aeronautical Components Manufacturing



Retail and Trading Company



Precision Components Manufacturing



Joyous Customers

Construction & Real Estate



Steel Processing Centres



Mattress Manufacturing



IT & ITES



Truck Body Building





CORPORATE OFFICE

Zyple Software Solution Pvt. Ltd.

No. 82, 2nd Floor, Lakshman Layout, Jambu Savari Dinne
Main Road, J.P Nagar, 8th Phase, Bangalore - 560076

BRANCHES

Kochi

Dhanushkodi Rd, Poonithura,
Maradu, Ernakulam,
Kerala 682038

Chennai

No. 3/4 NSC Bose Nagar, Alex
Nagar, B Colony Madhavaram
Milk Colony, Chennai,
Tamilnadu 600051

Abu Dhabi

Davean Bussiness IT Solutions
Ltd Kizad Main Business Center
Kizad Freezone, PO Box: 72946,
Abudhabi, UAE

+91 7299880500, +91 80- 35000296/97/98/99
info@zyplesoft.com